



# FARNSWORTH FILES

## 6th Grade ELA Quarterly Newsletter

The Home of Future Leaders

APRIL 2023 | VOLUME 12

### TEACHER CONTACT INFORMATION

[Christopher Englund](#)  
christopher.englund@spps.org  
(651) 744-4931 x44931

[Kolleen Maveus](#)  
kolleen.maveus@spps.org  
(651) 293-8880 x42262

CO-TEACHERS

[Joanna SanCartier \(SPED\)](#)  
joanna.sancartier@spps.org  
(651) 293-8880 x47919  
[Alex Hilton-Watson \(ELL\)](#)  
[alex.hilton-watson@spps.org](#)  
(651) 293-8880 x47911

### READERS WORKSHOP

This quarter, we will be reading novels from the **Fantasy genre**. We will continue to focus on characterization, conflict, setting, and themes in our books. Another layer that we will be analyzing and discussing in this unit is that of archetypes and stereotypes.

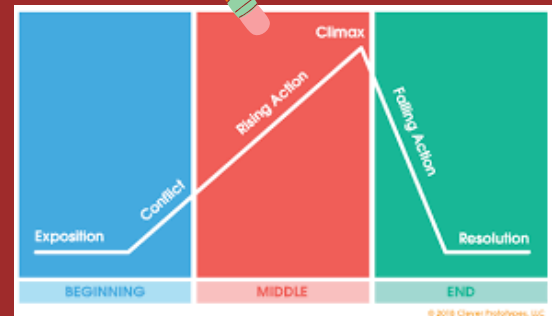
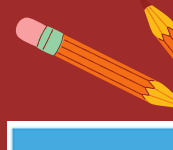
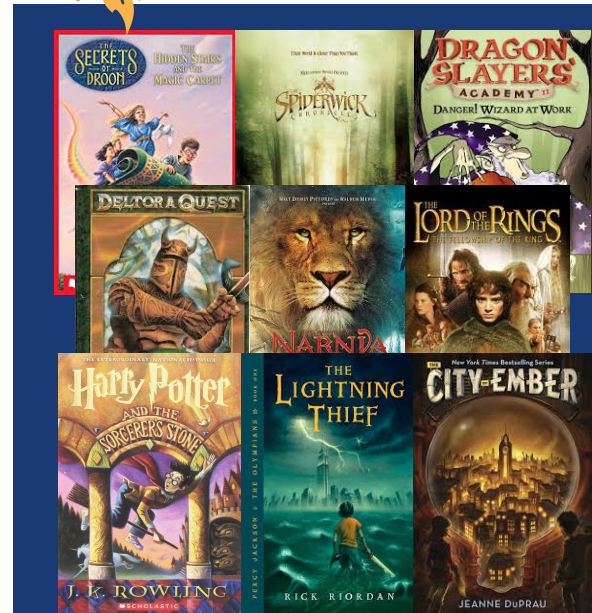
It is important that your student is reading a **FANTASY genre book** during this unit, as all of our work relates directly to this type of text. **Examples of books** are pictured to the right.

Any time remaining at the end of the quarter will center on poetry.

### WRITERS WORKSHOP

This quarter, we will focus on writing stories in the **Fantasy genre**. Students will follow the plotline structure of writing (characters, setting, rising action, climax, falling action, resolution, and theme). See the plotline example to the right. Students will be creating fantasy characters and events, describing adventurous conflicts, developing characters, adding dialogue, and embedding themes within their writings.

Any time remaining at the end of the quarter will center on writing poetry.



### FROM MS. JOANNA...

If your student is receiving SPED support, feel free to contact me with any questions or concerns. My contact info is above.

# MCA TESTING

IN ORDER FOR YOUR CHILD TO DO THEIR BEST ON THE MCA READING ASSESSMENT, WE ENCOURAGE FAMILIES TO SUPPORT THEIR CHILD IN THESE WAYS AT HOME:

- ENSURE YOUR CHILD GETS A GOOD AMOUNT OF SLEEP DURING THE TESTING WEEK
- SUPPORT YOUR CHILD BY PROVIDING HEALTHY AND SUSTAINING MEALS
- PROVIDE YOUR CHILD WITH A PEACEFUL SCHEDULE AT HOME AND MAKE SURE THEY GET TO SCHOOL ON TIME
- SUPPORT YOUR CHILD WITH POSITIVE AFFIRMATIONS ON HOW THEY TAKE THE TEST. ENCOURAGE THEM TO DO THEIR BEST!



# ELL UPDATES...

If your student is receiving ELL support, feel free to contact the ELL teacher listed above with any questions or concerns.

## READING AT HOME

Reading at home for **30 minutes each day** is a continued expectation for 6th grade students. There is no shortage of reading material available to students. In addition to physical books, students have access to multiple apps on their iPads with digital books. All reading logs and login information are linked in Readers Workshop classes in Schoology for students. Please be encouraging students to work toward this 30 minute reading goal each day as it will help to improve comprehension skills and boost testing scores.

## WEEKLY READING LOG SAMPLE

WEEK 1: NOVEMBER 12-18		BOOK TITLE	MINUTES READ	PAGES READ
11/12	Friday			
11/13	Saturday			
11/14	Sunday			
11/15	Monday			
11/16	Tuesday			
11/17	Wednesday			
11/18	Thursday			



## APPS & WEBSITES FOR READING ONLINE:

- Epic
- MackinVia
- LibraryGo
- eBooks MN
- TeenBookCloud
- TumbleBooks Library
- Audiobooks & Podcasts
- St. Paul Public Library Overdrive



## GRADING & HOMEWORK

All classwork, practice, and assessments (projects, tests, quizzes, performances) will be graded according to proficiency on the Common Core Standards. Students will receive a score of 0 - 4 on all work.

- 0 - incomplete
- 1 - beginning
- 2 - developing
- 3 - proficient
- 4 - exceeds

**\*\* A score of 0 - 2 can be redone until the student reaches a score of at least 3 (within the designated quarter).**

Grades are weighted:  
20% - classwork  
80% - assessments

**QUARTER 4 EXTENDS FROM APRIL 10, 2023 TO JUNE 14, 2023**



For more resources, visit:  
<https://libguides.spps.org/mssterm>

TIME FOR SUMMER READING



WHAT WILL YOU BE READING THIS SUMMER?

